

Columbia Underground

News of the Columbia Garden Club

President Karen Blackmore 442-1873



CALENDER OF EVENTS

Feb 8, 1 pm

“Seeds and Cuttings, the two best methods of propagation”
Jeff Oberhaus,
Vintage Hill Farms

March 8, 1 pm

“Planting Trees for Lasting Beauty” Ann Koenig,
Forester, Mo. Dept. of Conservation

March 12,13,14

Art In Bloom

April 12, 1 pm

“The Beauty of Insects-from Beneficial to Harmful”
Anastasia Becker,
State Integrated Pest Management coordinator

April 16

Central District Spring Meeting,
Tipton, Mo.

April 24

FGCM State Convention,
Chesterfield, Mo.

April 30-May1

CGC Plant Sale

May 10,1 pm

“Beauty in the Seedlings” Bart Piotter takes us on a tour of his nursery.

May 14-16

NGC National Conv.

May 22

CGC Flower show

June 14, 8:30 am

“Let Beauty surround You”

CGC Tour of five members gardens.

July 12, 9 am

“Enjoy the Beauty of Day-lilies and Hostas” Optional meeting/tour of Julia Semon’s Gardens

Sept 10

Central Dist Fall Mtg.

Sept 13, 12 pm

“Sharing the Bounty and Beauty of our Labor”

Carry in Luncheon

Oct 11, 1pm

“The Beauty of Bats” Dr. Sybil Amelon, Research Biologist, Mo Dept of Agri.

Nov 7-9, 1 pm

FGCM Fall Board Mtg.

Nov 15, 1 pm

“Bringing the Beauty of Nature inside for Thanksgiving”

Janet Lindstrom, CGC Member and , certified florist

Dec 13, noon

Holiday Tea



February is not always the best month for attendance. Hopefully the weather will cooperate and you can all come out to see what Jeff Oberhaus has to say about “Seeds and cuttings, the two best methods of propagation” If you have not been to his greenhouse, Vintage Hill Farm, you must go this year as it is so worth the trip! It is really hard to explain. It is over the top! Jeff is a faithful advertiser in this newsletter and supportive of our club. I know we will learn a lot from him and at the time of year to put it to good use! Please join me in welcoming Jeff in February!

ART IN BLOOM

March 12,13,14

The dates are set and it is time for those of you who signed up to begin thinking about what you need to do! Mary Jane Wheeling is the Chairman and the committee members are listed on page 13 of the yearbook. This is such a fun project and helps us achieve our goal of educating the public. Mark your calendar to go to the Museum of Art and Archeology to see our entries. We do not usually win as we have tough competition with the flower shops. We certainly are not embarrassed and do quiet well considering our limited funds and material and limited experience. You will enjoy the show so plan to drop by. There is no charge. Mary Jane will be contacting you regarding plans for this committee.

Be My Valentine!



Unless otherwise noted, our meetings take place at: Trinity Presbyterian Church , 1600 West Rollins Road ,Columbia, Mo 65203 445-4469. Guests are welcome. We are always looking for new members.

Columbia Garden Club Minutes January 11,2010

President Karen Blackmore called the meeting to order at 1:10 p.m. She welcomed 5 guests and 2 new members. Our guests were Becky and Ron Westhues, Mary Redders, Linda Rubin, and Karen Brooke. Our new members are Leslie Rosenkrans and Lynda Blades. Karen introduced our guest speaker, Dorothy Collett, who is a professional artist and member of the Tipton Garden Club. Dorothy talked about growing gourds and how to prepare them for painting. She brought many of her creations to show and sell.

After the presentation, Karen announced that she had purchased and cleaned some gourds for members to take home and paint, and then bring back so we can sell them at the Plant Sale in May. This will be an additional way to make money for the club.

As chair of the Horticulture/Floral Design committee, Carole Van Vranken brought her flowering anthurium to show, and gave a short presentation about the plant.

The business meeting was called to order at 2:27. 27 members stayed for the business meeting. Phyllis Jiji gave the inspiration titled *Peaceful Garden*. The minutes and treasurer's report from the December meeting were approved as printed in the newsletter. The minutes and treasurer's report will now be printed as part of the newsletter.

Karen brought to our attention that Standing Rule #4 was no longer correct since our dues are now \$20.00. After some discussion, Janet Lasley moved that we change the rule to read -"Members joining after June 1st will pay 1/2 of the regular dues for the remaining program year." Carolyn Doyle seconded the motion and it was approved.

COMMITTEE REPORTS - Gayle Fry's conservation report was about raptors and included a comprehensive handout from the Missouri Department of Conservation..

Karen asked if anyone had questions or recommendations regarding the proposed budget. Carolyn Doyle asked that the Flower Show expense be increased. After some discussion, Carolyn moved to increase the Flower Show expense to \$400.00 Marie Pasley seconded the motion. The motion was approved by the members. Marie Pasley then moved to approve the budget and Marlene Willick seconded the motion. The motion carried.

Karen will be setting up a suggestion box for members to put in any suggestions they have about programs or anything having to do with the Columbia Garden Club. She also asked if we needed to continue the Calling Committee. After some discussion, it was decided that this is still a necessary function of the organization.

The meeting was adjourned at 2:57 p.m. Respectfully submitted, Evette Nissen, Secretary



A big thank you to Dorothy Colette for traveling to Columbia in the middle of winter to talk to us about gourds! Many of us brought a nice one home with us! She has also invited us to go to her home on July 20th at 1:30 to attend a meeting with the Eldon club. She will show us her gourds, those growing and her dried supply plus her painted ones. She also grows flowers as a business and makes deliveries to some of our local flower shops. She will show that operation as well. If you are interested in going, let me know as I plan to go and would be happy to have you go along! KB

PLANT SALE CO-CHAIRS HAVING FUN PLANNING !!!

Janet Lindstrom and Connie Blackmore agreed to co-chair the plant sale even though they had not done it before. Way to go girls! They are working hard on the initial planning and counting on you to help as we get closer to spring! We will have the sale a little later this year, May 1st with set up Friday April 30th. We are also planning to stay open longer, possibly to 3:00pm. We are getting plants on consignment from a few vendors and will send back what we do not sell! We hope this will work out well for us as well as be a little easier. We are using many of the Ashland vendors and that club makes much more than we do with half the membership! We will have empty pots for you at the February meeting and encourage you to start thinking about what you can contribute as your plants appear. Your donations are pure profit! We will have hanging baskets, annuals, roses, herbs, native plants, birdhouses, plant markers and our favorites from Ken Sadler...tomatoes and peppers! We will again need your baked goods and will have a place to sit and enjoy! A meeting will be called before or after the April meeting to get the volunteers organized for the sale. If you have not signed up, please do so as we need all hands on deck for this, our only ways and means project of the year!

Mark your calendars for: Spring District Meeting –Ashland in April, our flower show May 22! Planning ahead is so important!



Feb Treasurer's Report
Virginia Itschner, treasurer

Balance on Hand January	\$2470.61
Income	
Dues (2 @ \$20)	\$40.00
Calendars (3 @ \$5.33)	15.99
Flower Show Handbook	15.00
Shirts (2 @ \$18.35)	36.70
Total Income	107.69
Expenses:	
Trinity Pres. Feb. Room Rental	25.00
Balance on Hand February 1	\$2553.30
CD-Premier Bank	\$3080.01
Total Assets	\$5633.31

Are you painting your gourds? We are thinking we should have a silent auction for the very best ones! That would allow everyone to have a chance on the best ones and set the price! You may return them at any meeting prior to the sale and we can show them off! The sale committee will take them when you want and store them for the sale.



Please welcome new members:

Diane Poole, 313 Rockingham Drive, Col., Mo 65203, 445-5906 (12/09)

Lynda Blades, 18193 Monroe Road. 124, Holliday, Mo. 65258, 1-600-266-3373 (1/10)

Leslie Rosenkrans, 21793 Monroe Rd. 237, Paris, Mo. 65275 660-327-4727 raftery@mcmsys.com (1/10)

Remember to update in your yearbook! Note, I plan to add new members as we go along and show the previous ones a few months as we need to keep welcoming them until they get to know us better! It takes awhile to get comfortable so make extra effort to meet our newest members!

Treats for the February meeting will be provided by: Jane Sadler and Virginia

Vole Adventures with Marie Pasley

I have had a recent major infestation of voles and have done some research on ridding my garden of them so thought I'd share it with you.

Voies are rodents, approximately 3.5-5 inches long, dark brown to gray in color. They look a lot like a hamster with a shorter tail like them and round ears. Although, they are kind of cute, they are devastating to bulbs, bulbous roots, grass roots, and plant stems, they can girdle young trees, too. They raise 5 to 10 liters a year, with 3-5 young in a liter. There are 3 species in Missouri, pine voles, meadow voles, and prairie voles, I think I have meadow voles. They have been known to use mole runs to travel in but usually prefer surface runs.

I live in the middle of what used to be a soy bean field, so I have grass fields around my 2.5 acre yard, so I've always had voles (field mice). My 2 cats have always kept them in check, unfortunately my 2 cats died over the past 2 years of old age, leaving me only Sam, our golden retriever. Sam's method of vole hunting is digging. Most days he seems to be going to China and this past summer he tried his best to dig up an ornamental grass I had planted in my largest daylily bed. Little did I know, under this grass was developing a huge vole colony. Last fall I started seeing vole runs, pathways approximately 1/2 "deep along the top of the soil. These pathways spoke out from the ornamental grass to nearby daylilies, where I would see a hole into the ground under my treasured daylily. I could grab the top foliage and it would easily come up with the roots totally cut off at the soil line, "vole food". It is devastating because of course this is my most expensive daylily area.

Methods of ridding yourself of voles vary; trapping and poisoning being the most used. I chose to trap them, using mouse traps. I place the peanut bated trap in the vole run on the soil surface, then check the traps daily. Since voles don't hibernate they have continued to feast on my daylilies, even under the snow cover but I am getting some of them. I have trapped 9 since the first of December, just call me "the vole trapper". They aren't fast runners, so if you see them on the surface you can step on them if you're fast. The other thing I'm doing is raising 2 new kittens, Molly and Polly. They are teenagers now, Molly caught her first vole today, boy! I was so proud of her. The problem I had is she brought it back into the house alive, luckily voles are slow. Hope this can help you in your vole adventures. Check Extension guide sheet G9445 or [http:// extension.missouri.edu/publications/DisplayPub.aspx?P=G9445](http://extension.missouri.edu/publications/DisplayPub.aspx?P=G9445) on the web for further information.

To new members: We ask that all members sign up to work on at least one project and more if you want to. Please look at the projects listed in the yearbook on pages 12 and 13 and let me know what you want to work on. They are all fun and the very best way to get to know us is to get involved. Do not be intimidated as we welcome your input, experience, ideas and time and energy! We are an old and proud club and want you to have the full experience of the Columbia Garden Club. Welcome!



VINTAGE HILL FARM

5643 Hwy 87 Franklin, MO 65250

Hundreds of unusual annuals, tropicals, perennials, shrubs and roses await you. Fantastic selection of pottery and garden ornament. Open Daily 9-5, March thru June & September & October.

Phone: 660-848-2373

E-mail: info@vintagehill.com

www.vintagehill.com

Directions: 6 miles NW of Boonville Bridge on Hwy 87

McConnell's Plantland- Perche Creek Gardens



1601 Earthland Road

Columbia, Missouri

573-445 5415

www.mcconnells-plantland.com

Come see
us! We
appreciate
your

Please shop at SUPERIOR GARDEN CENTER

A division of Rost, Inc.

3100 Old Highway 63 South

Columbia, Missouri 65201

573-442-9499 * 573-442-5211 (FAX)



Stainless
steel "captive plate" plant markers featuring a remov-
able plate that won't fall off and heavy duty 10 gauge
stainless steel posts.

www.KincaidGardens.com

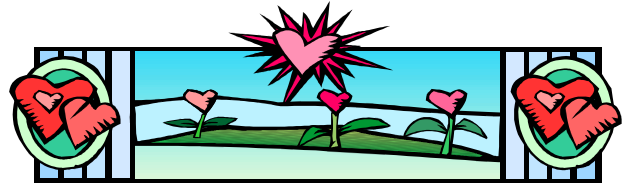
We are always looking for new advertis-
ers. If you know of anyone or any business
we should contact, please let me know! KB

ATTENTION

Elaine Fix, webmaster, at the state level has been working on the FGCM website and uploaded the whole Garden Club Manual with 2007, 2008 & 2009 updates. The date of the updates since 2007 are highlighted in red for easier viewing. Now members can view the entire manual as it is written.

<http://gardencentral.org/fgcmmissouri>

Courtesy Committee: If you know of any of our members who are ill, please let Carol Notbohm, Courtesy Chairman, or Rose Mayfield, also serving on that committee, know so they can send a card from the Columbia Garden club! There may be other occasions when you feel we should send a "courtesy" to someone. Please let them know that as well!



MIRACLE DIRT * MIRACLE MULCH

BART MENNING MIRACLE PRODUCTS

Miracle Dirt \$46

Top Soil - Dry, Screened, 30% Compost

Dry, Screened Top Soil \$40

Screened Composted Manure \$30

Gravel - Sand

Miracle Mulch \$36

Double Ground, Brown, 30% Compost

Natural Mulch \$30

Cedar Mulch \$40

Other Mulches

Horticultural Services

↻ **Lawn Aeration**

↻ **Mulching**

↻ **Seeding**

↻ **Pruning**

\$10 OFF

ANY DELIVERY

With coupon
Expires 11/30/09.

DAVE CASEY
DELIVERY

All items priced
by cubic yard.

DAVE CASEY DELIVERY

864-3340