

Columbia Underground

President's Corner

Calendar of Events

Feb. 13th - Meeting

Program—What's New
in The Garden—Alice
Longfellow

March 12th—Meeting

Program—Columbia
Parks and Recreation
Horticulturist, Jen
Sieradzki

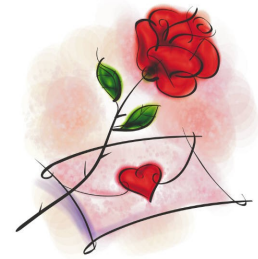
March 16th-18th

Art in Bloom

March 28th

Central District Spring
Meeting

Happy Valentine's Day! How fast time flies! I missed my first meeting in a long time in January and I heard that Carolyn has not lost her touch. She and I plan to alternate the meetings. I also heard that Mary Kroening was as interesting as I had made her out to be! Hopefully you all learned a lot and enjoyed the meeting. I was so pleased that we had such a good turnout. I had a lovely trip to Florida. We did not see one drop of rain and the weather was perfect the entire trip. We visited friends in Captiva, south of Fort Meyers. The ocean was wonderful and the tropical plantings were to die for. I was not as impressed with the gravel yards but then it was easy not to look down as many of the trees had orchids blooming in them! Our friends live six months in Florida and six months here. They buy orchids while they are there and as they leave, they use the fibers from the outside of the coconuts to make a kind of basket for the bark and the orchid. They wire it between the branches in the trunk of a tree and just leave it. Some do not make it but many do. There were four in bloom while we were there and they were very healthy and, of course, beautiful.



I have received our invitation to the spring district meeting from the Mexico Garden Club. Please see the invitation in this newsletter and let Evette know if you plan to attend. She will need your \$15.00 no later than our meeting on the 13th as she must mail our list that day. In fact, you might let her know you plan to attend so that she can have the list prepared and ready to leave at the post office! Also, registration is due by March 24th for the state convention in Cape Girardeau. You will find the registration form in the current issue of the Garden Forum. We will be voting on delegates at the February meeting. State Conventions are a lot of fun and at this one you can choose to take a trip to the Charleston Dogwood and Azalea bus tour for an additional \$44.00. I understand seating is limited so don't wait too long to register.

Finally, if the weather continues to hold, we are sure to have another nice day on February 13 when Alice Longfellow comes to talk about "What's New in the Garden". Again, you will really enjoy her and would even more enjoy a trip to Longfellow's garden center this spring. I know she will have a lot of information for us. I am anxious to see all of you!

Karen Blackmore

Hospitality

February

Kay Egbert
Marsha Taylor
Carol Notbohm

March

Linda Rubin
Mary Redders
Wilma R Levy





Invites you to the
Spring District Meeting

March 28, 2012

Audrain County 4-H Center
21509 Highway D – South of Mexico

Program: Garden Inspired Art

Please send your Club's reservations including names of members attending and check for \$15 per person by March 14, 2012.

Please make checks payable to Mexico Garden Club and send to:

Laura Pitts, 1603 Lakeview, Mexico, Mo 65265

We also invite you to bring your "Garden Inspired Art" to share with other district club members. Please let us know what you plan to bring so display space will be available.

Be certain to bring items for the Central District Ways and Means table.

We look forward to your coming to Mexico.

The 4-H Center is located on Hwy D just south of the city. Hwy D is immediately north of Hwy 54 off of bus.54 to the west, across from Walmart. On Hwy D, cross the railroad tracks, and the 4-H Center is on the right.

New Calling Committee Members!!

We now have four members on the calling committee! A big thank you to **Diane Poole, Carolyn Adams and Virginia Itschner** for volunteering to work on this committee chaired by **Kathie Shreves**. The committee should plan to meet 15 minutes before the February meeting to get directions from Kathie.



Minutes for Columbia Garden Club January 9, 2012

Meeting was called to order by Carolyn Doyle, Co-President at 1pm. Linda Blades gave the inspiration. 34 Members were in attendance with 5 guests introduced.

Minutes from the December meeting were approved as written.

Treasurer's report will be given at the February meeting after audit is completed.

Design/Horticulture Brief- Alice Havard, Flower Show Judge explained the duties of the Flower Show Judges Council. They will assist area garden club members in the art of floral design and horticulture when asked. Since we have several Columbia Garden Club (CGC) members that are on FS Judges Council they will be presenting information to the CGC on design forms and horticulture at each meeting. Alice showed and explained requirements for a Mono Botanic Design using the *Pinus* species.

After refreshments, Mary Kroening, Entomologist gave a most interesting power point presentation on "Insects; the good, bad and cute". The importance of using integrated pest management was stressed, as well as identifying the pest before spraying to make sure you are using the correct control.

New Business- Carolyn Doyle, Co-President stated that the CGC by-laws needed to be reviewed. Volunteers for reviewing the by-laws are Jane Sadler, chair; Alice Havard; Linda Blades; and Diane Poole. They will make recommendations and report back to the club for approval.

Old Business- Some yearbooks still need to be picked up from Connie Blackmore, 2nd VP and membership chair.

Committees --**Art in Bloom** Chair, Mary Jane Wheeling encouraged members interested in working on a design for *Art in Bloom* to contact her. Members will be working within a team to create a design.

Calling Chair, Kathy Shreves still needs a couple members to make reminder phone calls to members.

Plant Sale- Ken Sadler asked if we still want him to grow tomato plants? Members are most appreciative of his continuing this.

Clean Up Columbia Chair, Janet Lasley stated that "clean up" date is April 14, 2012.

Conservation Chair, Gayle Fry passed out a new Conservation bird book *Enjoying Missouri's Birds*.

Courtesy Chair, Carol Notbohm reported no illnesses in the club. She asked to be contacted if anyone knows of a member illness so that she can send a card.

Garden Tour Chair, Cindy Deegan states that we still need a couple gardens for the tour. The tour is June 11.

Library/Wyatt Guest House Designs Chair, Lynn Birkby requested members sign up for filling open spots.

Newsletter Publisher, Evette Nissen requested articles be submitted no later than the 28 of the month for the following month publication.

Announcements- Mary Jane Wheeling invited members to attend the Discovery Garden Club meeting this evening. The program is on garden photography.

Meeting adjourned at 3pm.

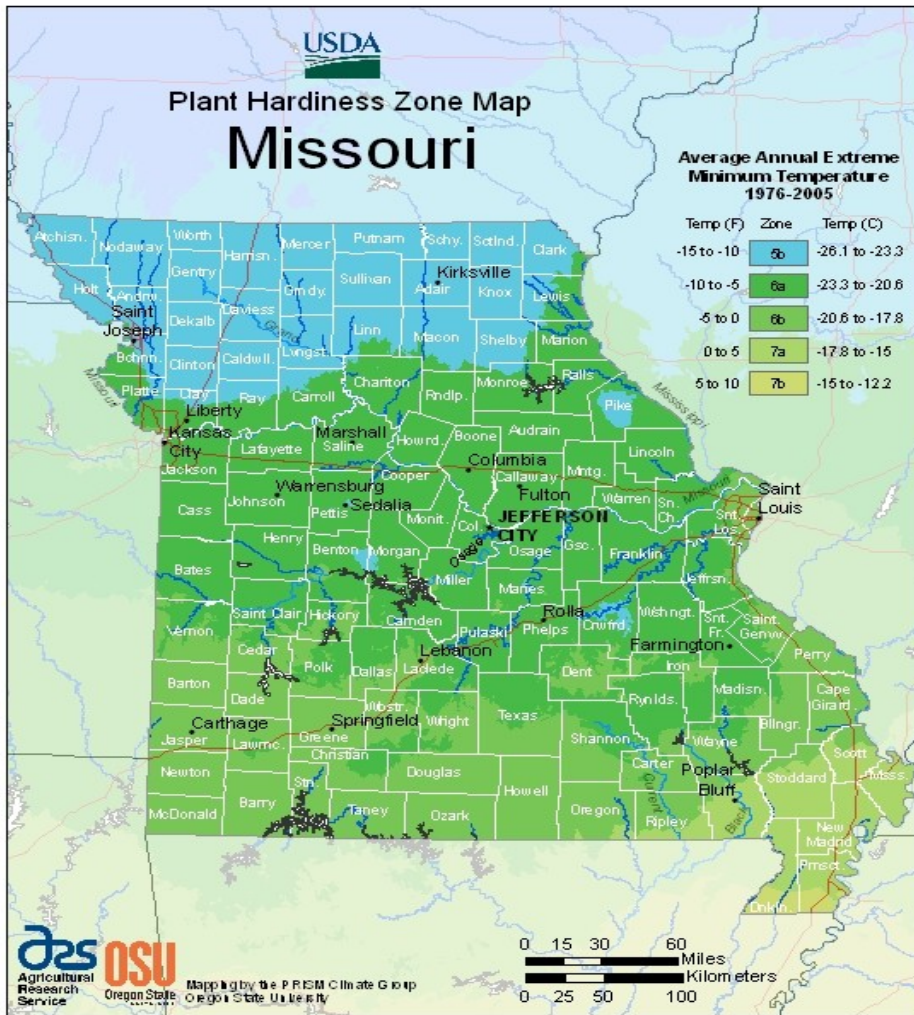
Respectfully submitted,
Marie Pasley, Secretary

Junior Garden Club needs your help!

The Jr. Garden Club Committee has a vacancy. If you are interested in helping children learn about gardening, please contact Marie Pasley. Also the Jr. Garden Club will be making nesting sacks for birds, and they need your dryer lint. Please bring it or any other materials the birds might use to make nests to our February meeting.



Hardiness Zones Change



Locally, our zone changed from 5b to 6a.

If your hardiness zone has changed in this edition of the USDA Plant Hardiness Zone Map (PHZM), it does not mean you should start pulling plants out of your garden or change what you are growing. What is thriving in your yard will most likely continue to thrive.

Hardiness zones are based on the average annual extreme minimum temperature during a 30-year period in the past, not the lowest temperature that has ever occurred in the past or might occur in the future. Gardeners should keep that in mind when selecting plants, especially if they choose to "push" their hardiness zone by growing plants not rated for their zone. In addition, although this edition of the USDA PHZM is drawn in the most detailed scale to date, there might still be microclimates that are too small to show up on the map.

Microclimates, which are fine-scale climate variations, can be small heat islands—such as those caused by blacktop and concrete—or cool spots caused by small hills and valleys. Individual gardens also may have very localized microclimates. Your entire yard could be somewhat warmer or cooler than the surrounding area because it is sheltered or exposed. You also could have pockets within your garden that

Continued to page 5

are warmer or cooler than the general zone for your area or for the rest of your yard, such as a sheltered area in front of a south-facing wall or a low spot where cold air pools first. No hardiness zone map can take the place of the detailed knowledge that gardeners pick up about their own gardens through hands-on experience.

Many species of plants gradually acquire cold hardiness in the fall when they experience shorter days and cooler temperatures. This hardiness is normally lost gradually in late winter as temperatures warm and days become longer. A bout of extremely cold weather early in the fall may injure plants even though the temperatures may not reach the average lowest temperature for your zone. Similarly, exceptionally warm weather in midwinter followed by a sharp change to seasonably cold weather may cause injury to plants as well. Such factors are not taken into account in the USDA PHZM.

All PHZMs are just guides. They are based on the average lowest temperatures, not the lowest ever. Growing plants at the extreme of the coldest zone where they are adapted means that they could experience a year with a rare, extreme cold snap that lasts just a day or two, and plants that have thrived happily for several years could be lost. Gardeners need to keep that in mind and understand that past weather records cannot be a guarantee for future variation in weather.

Other Factors

Many other environmental factors, in addition to hardiness zones, contribute to the success or failure of plants. Wind, soil type, soil moisture, humidity, pollution, snow, and winter sunshine can greatly affect the survival of plants. The way plants are placed in the landscape, how they are planted, and their size and health might also influence their survival.

Light: To thrive, plants need to be planted where they will receive the proper amount of light. For example, plants that require partial shade that are at the limits of hardiness in your area might be injured by too much sun during the winter because it might cause rapid changes in the plant's temperature.

Soil moisture: Plants have different requirements for soil moisture, and this might vary seasonally. Plants that might otherwise be hardy in your zone might be injured if soil moisture is too low in late autumn and they enter dormancy while suffering moisture stress.

Temperature: Plants grow best within a range of optimum temperatures, both cold and hot. That range may be wide for some varieties and species but narrow for others.

Duration of exposure to cold: Many plants that can survive a short period of exposure to cold may not tolerate longer periods of cold weather.

Humidity: High relative humidity limits cold damage by reducing moisture loss from leaves, branches, and buds. Cold injury can be more severe if the humidity is low, especially for evergreens.

Taken from the USDA website.

New Member!!

Please welcome **Margaret Ann Sullivan** back to Columbia Garden Club. Please add her to your yearbook. Her contact information is: P.O. Box 30765; Columbia, MO 65205 573-474-7261.

Columbia Garden Club Treasurer's Report January 31, 2012

Beginning Balance Checking November 30, 2012	2,881.09
 Expenses	
Ck#1797 12-12-11 Trinity Pres. Church Room Rental	25.00
Ck#1798 1-9-12 Trinity Pres. Church Room Rental	25.00
Ck#1799 1-18-12 Scholarship Fund Federated Garden Clubs of MO Life Membership for Karen Blackmore	50.00
Ck#1800 1-21-12 Karen Blackmore – Yearbook Printing	82.15
 Total Expenses	 -(182.15)
 Ending Balance Checking January 31, 2012	 2,698.94
 Certificate of Deposit Balance	 3,171.24
 Total Assets	 5,870.18

Floral Arrangements Schedule

If you would like to furnish flowers for the open spots, please contact Lynn Birkby at 573-443-8704.

Month	Boone Library	Wyatt Guesthouse
February	Betty Gladney	Janet Lindstrom
March	Kay Egbert	
April	Margaret Sullivan	Kay Egbert

WE NEED YOUR GARDEN!!!

Wouldn't you like to share your garden with the members of Columbia Garden Club? Cindy Deegan is looking for members gardens for our annual garden tour. The tour is Monday, June 11, so that gives you plenty of time to get everything planted and looking the way you want it to before the tour. Please contact Cindy at 443-5307 if you are willing to share your yard with us.

February Garden Tasks

Sow seeds of larkspur, sweet peas, Shirley poppies and snapdragons where they are to grow outdoors now. To bloom best, these plants must sprout and begin growth well before warm weather arrives.

Seeds of slow-growing annuals like ageratum, verbena, petunias, geraniums, coleus, impatiens and salvia may be started indoors now.

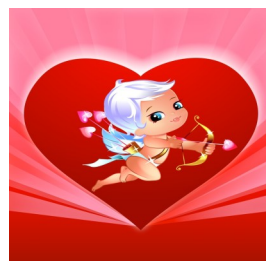
Start tuberous begonias indoors now. "Non-stop" varieties perform well in this climate.

Repot any root-bound house plants now before vigorous growth occurs. Choose a new container that is only 1 or 2 inches larger in diameter than the old pot. Begin to fertilize house plants as they show signs of new growth. Plants that are still resting should receive no fertilizers yet.

Branches of pussy willow, quince, crabapple, forsythia, pear and flowering cherry may be forced indoors. Place cut stems in a vase of water and change the water every 4 days.

Encourage birds to nest in your yard by providing water and by putting up bird houses. Planting suitable shrubs, trees, vines and evergreens will provide wild food sources and nesting habitat.

Taken from the Missouri Botanical Garden website.



Columbia Garden Club
 Co-Presidents: Carolyn Doyle
 Karen Blackmore
 1st VP: Barbara Rothenberger
 2nd VP: Connie Blackmore
 Secretary: Marie Pasley
 Treasurer: Evette Nissen
 Parliamentarian: Carole Van-
 Vranken

Newsletter Editor: Evette Nis-
 sen
 enissen57@gmail.com

Meetings take place at Trinity
 Presbyterian Church
 1600 West Rollins Road



VINTAGE HILL FARM
 5643 Hwy 87 Franklin, MO 65250

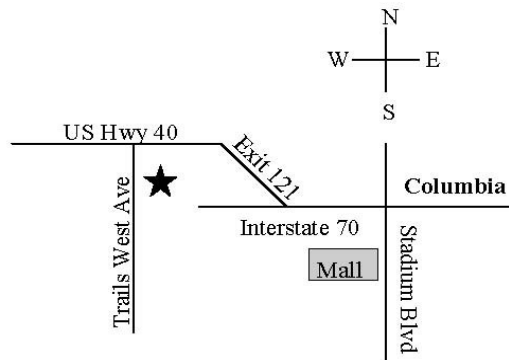
Hundreds of unusual annuals, tropicals, perennials, shrubs and roses
 await you. Fantastic selection of pottery and garden ornament.
Open Daily 9-5, March thru June & September & October.

Phone: 660-848-2373
 E-mail: info@vintagehill.com
www.vintagehill.com
 Directions: 6 miles NW of Boonville Bridge on Hwy 87



NEW LOCATION NOW OPEN!
See Map On Back

6 ACRES FULL OF:
 Mo. Hardy Trees & Shrubs • Flowers
 Perennials • Annuals • Tropicals
 Vegetable Plants & Seeds
 6 Kinds of Mulches • Landscape Supplies
 Bulk Gravels, Compost & Sand
and More Arriving Daily!
www.superiorgardencenter.com



573-442-9499

MIRACLE DIRT ★ MIRACLE MULCH

<p>Miracle Dirt \$46 cu.yd. Top Soil - Dry, Screened, 30% Compost Dry, Screened Top Soil \$40 cu.yd. Screened Composted Manure \$30 cu.yd. Gravel - Sand Other Top Soils Available All items priced by cubic yard.</p>	<p>Miracle Mulch \$36 cu.yd. Double Ground, Brown, 30% Compost Natural Mulch \$30 cu.yd. Cedar Mulch \$40 cu.yd. Dyed Mulch \$40 cu.yd.</p>
---	---

FIREWOOD - ORDER EARLY

Call for our Special Delivery Prices!

**DAVE CASEY DELIVERY
 864-3340**