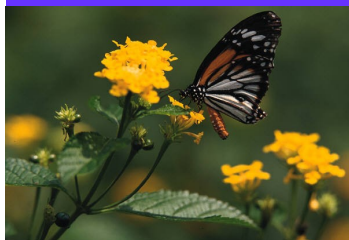


April 2013

Columbia Garden Club



The Newsletter of The Columbia Garden Club

Columbia Underground

Today's Labor, Tomorrow's Reward

A Note from the President

I am so proud of this club! We hosted a wonderful Central District Spring Meeting on March 27, at Bradford Farm. Evette handled the registration, Alice was responsible for the food and drinks and Connie the decorations, Barb S. grew the iris, and Marie kept it all together. But all their hard work and planning would have been for nothing if everyone else hadn't chipped in and helped. Folks cut out dozens and dozens of little colored birds, collected the Sunday funnies, and decorated the iris pots and the white tree branches that graced the entry tables. We baked more dozens of muffins and goodies, hauled in boxes of serving stuff and made tea and coffee and lemonade. Still others, several who couldn't make it to the meeting, came in on Wednesday to rearrange all the tables and chairs, put on the brown paper tablecloths and placed the charming iris pots, so everything was in readiness for Thursday. Then eighteen of us attended the meeting and enjoyed the fruits of our labors. The food was excellent, and we basked in all the compliments on the food and décor. It all went off without a hitch, (in spite of no flag to pledge allegiance to!), then all pitched in to clean up, and went home and put up our feet! Thanks so much to Marie and her committees, and to everyone who helped in any way.

I particularly appreciated seeing so many of our newer members who participated in the preparations and came to the meeting. It's an excellent way to get to know each other, and really to feel a part of an organization.

Our state first vice-president, Joyce Lewis was at the meeting, and with her was Nancy Howe, the editor of our FGCM magazine, the *Forum*. Karen had brought our (award winning!) floral design entry for Art in Bloom, which was much admired, including by Nancy, who plans to feature it on the cover of the next issue of the *Forum*!

Altogether it's been an awesome month for Columbia Garden Club, and Karen and I appreciate you all.

Carolyn Doyle
Co-President





March Meeting Minutes

Columbia Garden Club March 11, 2013 Meeting Minutes

Bruce Young, Executive Director of CMSE *Giving Gardens* spoke of the many job opportunities offered to the disabled employees of the facility. He discussed the benefits to the employees and community that the Giving Garden offers.

Call to order- The meeting was called to order by Karen Blackmore, Co-president at 1:55 pm. 36 members were in attendance with 3 guests Judy Stephens, Katie & Sylvia Graznik. New Member Annette Molitor also joined CGC.

Inspiration was given by Linda Blades.

Minutes and Treasurer reports will be approved at the April meeting.

Karen reported on members that have been ill. Claire Kucera is back in Lenoir after falling and breaking his leg. Carol Notbohm is home and managing on her own. Carolyn Kemper is better and has been discussing putting in a garden. She remains in Springfield, MO.

Courtesy- Karen asked for someone to volunteer to take Carol Notbohm's place with the Courtesy committee.

Art in Bloom- Karen reported that the group has selected "The Musician" as their art work to mimic for the show this year. This is one of the permanent displays at the museum.

CD Spring Meeting- Marie Pasley reported that volunteers are needed to decorate on Wednesday March 27 - 1 pm till done. Then we will need volunteers to set up food on Thursday starting at 7 am. Cookies, breads, or muffins can be delivered on Wed at 1 or Thursday morning 7:30 to 8 am.

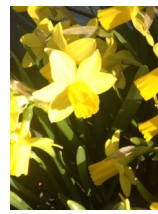
Hospital Storybook Gardens- The plan is to plant the 4 gardens on April 16 or 23. We will not know until closer to April 16 if the beds are ready for us to plant. Members donating plants will be contacted with date for delivery of plants. Plants will be delivered to the Hospital planting area. Stage 2 Opening Event of the gardens will be on April 27.

Clean Up Columbia- Janet Lasley reported that the group will meet at McKee Park off of PP on McKee Lane at 10 am on April 13.

Plant Sale- April 27 Connie Blackmore, co-chair reported that members have made bird houses and glass wind chimes. She encouraged members to bring white elephant "garden related" items for the boutique and plants from our gardens. She stated we will have vendors with wildflowers, hanging baskets, and Centralia HS will have annual flowers. Ken and Jane Sadler are growing tomatoes. Karen Blackmore has ordered a succulent wreath for the raffle this year for the plant sale.

(continued page 3)





Minutes (continued)

Club Garden Tour- Carolyn Adams stated she still needs two gardens for the tour.

Horticulture/Design Tips- Marie Pasley discussed Elfin Award in a Flower Show. 3 awards may be awarded in a Section. The entire section must consist of dwarf or miniature varieties or cultivars or be plants with naturally small growth. Plants that are dwarf or miniature never compete against standard size plants or designs. She also discussed items and plant materials that are suitable for a "Fairy Garden". Fairy Gardens can come in any size mini to dwarf size plants can be used. She displayed dwarf Oncidium and Phalaenopsis orchards. Stating that they set bloom more easily when put outside in a shaded area in the warm weather, leaving them out until close to frost time. This promotes bloom set. Very porous bark soil with water every 7-10 days was suggested. Over watering can be a problem.

FGCM Convention is May 14 to 16. Kay Egbert and Barb Rothenberger will be delegates for the Convention for CGC.

Carolyn Doyle reported a request from the Colonies for someone to give a workshop on planting a plant in a pot for the patients. Barb Rothenberger volunteered to assist.

Yard of the Month- Emily Bonwich, chair encouraged members to be on the look out for yards suitable for yard of the month candidates. This can start in April and go through September.

Floral Arrangements- Lynn Birkby stated that Barb Rothenberger is taking flowers to the library in April and Karen Blackmore is taking to Wyatt guest house. She asked for more volunteers for taking arrangements.

Announcements

Judges Symposium- Karen Blackmore stated that Connie Blackmore and Janet Lindstrom have volunteered to be pages for the judges at the Symposium on June 11 & 12.

Next CGC meeting is April 8- Program on "Iris" by Barb Schutte with *Show Me Iris Society*.

Meeting adjourned at 2:50 pm.

Respectfully submitted by secretary, Marie Pasley

Member Information

Welcome new member Annette Molitor! Please add her information to your yearbook. 2612 Gabrianna Ct., Columbia, MO 65203; 573-289-5140; urbmolitor@aol.com

Please correct Susan Elledge's e-mail address. It should be delledge000.net



March Treasurer's Report

Columbia Garden Club Treasurer's Report

Beginning Balance Checking		\$3,806.84
Deposits		
Membership	\$40.00	
Central District Seed Money	\$200.00	
Central District Registra- tions	\$450.00	
Central District Registra- tions	\$930.00	
Central District Registra- tions	\$135.00	
Membership	\$20.00	
Total Deposits		\$1,775.00
Expenses		
Ck#1852 - MBS March Newsletter	\$6.16	
Ck#1853 - Alice Havard - speakers gifts	\$20.00	
Ck#1854 - Trinity Pres. Church		
March Rent	\$25.00	
Ck#1855 - Carolyn Swope - Hospitality	\$2.97	
Ck#1856 - Karen Blackmore - Art in Bloom	\$59.53	
Ck#1857 - Tim Reinbott - CD Meeting Speaker	\$100.00	
Ck#1858 - Hoss's - CD Meeting Lunch- eon	\$992.43	
Total Expenses		(\$1,206.09)
Ending Balance Checking		\$4,375.75
Certificate of Deposit Bal- ance - 3-1-2013		\$3,202.14
Total Assets		\$7,577.89

Art in Bloom

Congratulations to Karen Blackmore, Carolyn Doyle, and Leigh Speichinger! Their design for Art in Bloom won 3 awards! They won Design that Best Depicts the Artwork, Most Creative and honorable mention for Best in Show. Pictured below is the painting they chose “Portrait of a Musician” and their design.



Calendar of Events

April 8—CGC Meeting-
Barb Schuette—Iris

April 13—Clean Up Co-
lumbia—McKee Park-
10:00

April 20-Boone County
Extension Garage Sale-
8:00-3:00

April 26-CGC Plant Sale
Set-Up-2:00-4:00

April 27-CGC Plant Sale

Hospitality

April

Connie Blackmore

Virginia Itschner

Barbara Rothenberger



Columbia Garden Club

Co-Presidents: Carolyn Doyle

Karen Blackmore

1st VP: Barbara Rothenberger

2nd VP: Connie Blackmore

Secretary: Marie Pasley

Treasurer: Evette Nissen

Parliamentarian: Carole Van-
Vranken

Newsletter Editor: Evette Nis-
sen

enissen57@gmail.com

Flower Arrangement Schedule

Month	Boone Library	Wyatt Guesthouse
April	Barbara Rothenberger	Karen Blackmore
May	Patty Purves	
June	Leigh Speichinger	Leona Litteral

Central District Meeting

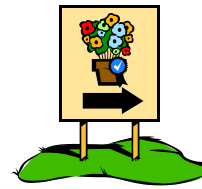
Here are a few pictures from the Central District Meeting that our club hosted. For more pictures, please go to this link: <http://mrkewpie.zenfolio.com/p379504430>



Top: Trees decorated by some of our members.

Top right: Table decorations.—Garden magazines were used as placemats. Iris donated by Barb Schuette were given as gifts for each guest and as centerpieces.

Lower Right: Some of the many breakfast goodies donated by our members.



Plant Sale—Saturday, April 27

Our annual plant sale is our big money maker of the year and all members are needed to help make it a success. One way you can help is to donate plants either from your garden, or ones you have started from seed. Please bring your plants already priced, and use whole numbers for pricing (\$1.00, \$5.00) Please price them similar to retail store pricing, not higher and not a lot lower. Bring your plants on Friday afternoon between 2:00 and 4:00.

Another way you can help is to bring gently used garden items for the Garden Boutique. Please price these items before you bring them. Price them at a price you think they will sell.

If you don't have any plants or items to donate, you can donate your time. We need volunteers to help set up on Friday afternoon, April 26th from 2:00-4:00. Volunteers are also needed for the sale on Saturday April 27th. We need people from 8:00-3:00. There will be sign up sheets at our meeting next week.

Discovery Garden Club will be running the bake sale on Saturday, and would appreciate any baked items you can donate.

Ken and Jane are growing and donating our tomato plants and several members have made birdhouses and windchimes to sell in the Garden Boutique.

If you can't help with any of the activities listed above, come and shop the sale!

Hospital Youth Garden

Plants being donated by CGC members for the Youth Garden will need to be delivered to the hospital on April 23, 10 am. If you are unable to deliver your plant to the hospital, contact Marie Pasley smpasley@aol.com or 573-474-5245. Because of the snow and moisture, the ground around our beds is very muddy. So at this time we will plant on April 23. Refer to the March newsletter for list of plants and members donating plants.



Boone County Extension



“Clear Your Clutter” Garage Sale At the Boone County Extension Center Saturday, April 20, 8 a.m. to 3 p.m.

- Drop off items April 18 and 19 or call for pickup of larger items
- Donations are tax deductible
- Volunteers needed to help
- Huge sale with items donated by folks from all over the county
- Money raised will help fund the Boone County Extension Center and its programs
- Sorry, **NO** TVs, microwaves, or computer monitors accepted

UNIVERSITY OF MISSOURI
 Extension

1012 N. Highway UU, Columbia (From Columbia, take I-70 West to the Midway Exit. Take Midway Exit, turn left on to Highway 40 and go over I-70 and turn right on to Highway UU.)

Contact person: Marie Pasley (573) 474-5245

Garage Sale at Boone County
Extension Center, 1012 N.
Highway UU April 20 8 to 3

Garage Sale at Boone County
Extension Center, 1012 N.
Highway UU April 20 8 to 3

Garage Sale at Boone County
Extension Center, 1012 N.
Highway UU April 20 8 to 3

Garage Sale at Boone County
Extension Center, 1012 N.
Highway UU April 20 8 to 3

Garage Sale at Boone County
Extension Center, 1012 N.
Highway UU April 20 8 to 3

Garage Sale at Boone County
Extension Center, 1012 N.
Highway UU April 20 8 to 3

Garage Sale at Boone County
Extension Center, 1012 N.
Highway UU April 20 8 to 3

Garage Sale at Boone County
Extension Center, 1012 N.
Highway UU April 20 8 to 3

Garage Sale at Boone County
Extension Center, 1012 N.
Highway UU April 20 8 to 3

Garage Sale at Boone County
Extension Center, 1012 N.
Highway UU April 20 8 to 3

Thanks to our Advertisers!




NEW LOCATION NOW OPEN!
See Map On Back
6 ACRES FULL OF:
 Mo. Hardy Trees & Shrubs • Flowers
 Perennials • Annuals • Tropicals
 Vegetable Plants & Seeds
 6 Kinds of Mulches • Landscape Supplies
 Bulk Gravels, Compost & Sand
and More Arriving Daily!
www.superiorgardencenters.com



573-442-9499

MIRACLE DIRT ★ MIRACLE MULCH

<p>Miracle Dirt \$46 cu.yd. Top Soil - Dry, Screened, 30% Compost Dry, Screened Top Soil \$40 cu.yd. Screened Composted Manure \$30 cu.yd. Gravel - Sand Other Top Soils Available All items priced by cubic yard.</p>	<p>Miracle Mulch \$36 cu.yd. Double Ground, Brown, 30% Compost Natural Mulch \$30 cu.yd. Cedar Mulch \$40 cu.yd. Dyed Mulch \$40 cu.yd.</p>
---	---

FIREWOOD - ORDER EARLY

Call for our Special Delivery Prices!

DAVE CASEY DELIVERY 864-3340



VINTAGE HILL FARM
 5643 Hwy 87 Franklin, MO 65250

Hundreds of unusual annuals, tropicals, perennials, shrubs and roses await you. Fantastic selection of pottery and garden ornament.
 Open Daily 9-5, March thru June & September & October.

Phone: 660-848-2373
 E-mail: info@vintagehill.com
www.vintagehill.com
 Directions: 6 miles NW of Boonville Bridge on Hwy 87