

**IROCF** Volume XXXIII No.3 Winter 2011

## *International Rose O'Neill Club Foundation*

*"Purpose: To preserve the  
memory of Rose O'Neill  
and inform the public about  
her works and to promote  
the cultural arts"*

Founder *Pearl Hodges*

### *Board of Directors*

President	Susan Wilson
First Vice President	Susan Strauss
Second Vice President	Ron Songer
Secretary	Janie Derby
Treasurer	Arlene Asher
Past President	Audrey Looman
	Arnie Andersen
	Connie Harrell
	David O'Neill
	David Sullivan
	Eleanor Waladkewics
	Jeannine Wing

Honorary Member Holly Baker

Dues \$20.00 single  
\$25.00 family  
write check to IROCF

mail to Ron Songer  
2013 Ridgeway Drive  
Dennison, Iowa 51442

**IROCF**  
P.O. Box 668  
Branson, Missouri 65616

## **PRESIDENT'S MESSAGE**

Well, winter has come and here I am late getting this Kourier to you!

### **The important news is that the Ramada Is closed!**

The customer services division of Ramada Corporation started calling individuals on January 12th to cancel reservations and offering other properties in Branson.

The phones started buzzing and as soon as I heard about this I called Ramada customer services to stop the individual calls which worked for about a week and then started again.

I the meantime I contacted the Branson chamber of Commerce. They were just hearing of the closing and were very helpful. I was put in touch with a group sales person for the West Gate Woods Resort in Branson. After many phone calls back and forth, arrangements were made to go to Branson to stay at this Resort.

Connie Harrell and I went to Branson on Friday, January 15th and met with their coordinator on Saturday, January 16th. Both Connie and I were very pleased with the accomodations and the ammenities. West Gate Woods has enough street level rooms for people who need them and meeting areas large enough to accomodate our various meetings both large and small.

I recieved the contract in the mail and after clarifying some points have signed and returned it.

### **Our New location is Westgate Branson Woods !**

Again, to all of you who sent or called about room resevations, **Thank You!** All the reservations have to be made through me in order to get the Kewpiesta rate. So if you haven't sent it to me or called me **314 832 6464** as of yet, do it soon. It is very important that we give them all our names and room requests so that they do not book a large group that might want our rooms.

Also, remember that you have to pay Kewpiesta Registration [\$25.00] in order to recieve our rate of \$47.80 a day.

Good Kewpies do things in a fair and friendly way!

**Kewpies Go to School** dates are **Wednesday, April 13th to Sunday, April 17, 2011**



## Westgate Branson Woods

2201 Roark Valley Road  
Branson, Missouri

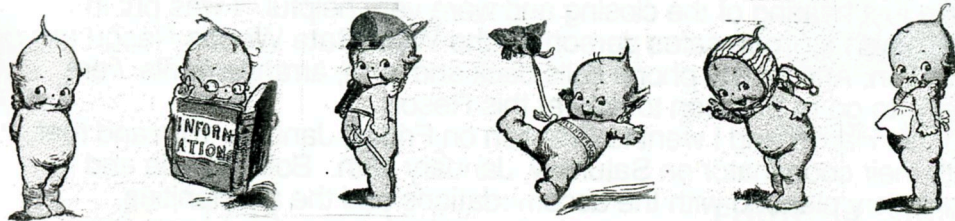
**Kewpiesta 2011** will be at a new location due to the closing of the Ramada Inn on the Strip.

**The Woods** is a Resort complex of cabins, condominiums, six story high rise buildings, and street level buildings. This is a gated community with 24 hour security. It is situated in the midst of pine woods on a ridge above the Shepard of the Hills Expressway and is very quiet. You may even be pleasantly pleased by seeing deer in the road at night or ducks walking across the road traveling from ponds and lakes. It is a definite upgrade from the Ramada.

We will be housed in four of the street level buildings that are located across from each other. Our activities will be held in the large Pavilion, the Lodge, and the Activities Room in the Clubhouse as well as in our four buildings.

**The Room rate is the same as last year.** Because this is a resort all reservations **must** be made through me. Also if you need to cancel it must also be made through me. If anyone does not cancel through me, there will be a charge of one night stay that will be passed on to you. Hopefully, no one will have to cancel. In fact let's hope that we'll have even more Kewpies in attendance than last year!

I think that everyone will be very pleased with our new home!



Now, here's a list of things that I think everyone will be asking:

Rooms have two queen beds, credenza with drawers and a television, table and two chairs.

The back of the room is similar the the rooms at the Ramada with an open area vanity and closed bathroom.

The rooms are about three foot deeper than our rooms last year. So if you put a six foot table at the window there is still room to walk between the table and the bed without removing one bed.

The windows are not as large as they were last year but are a good sized window for a display! I will let you know the exact size as soon as possible.

Breakfast is not included. There is a Breakfast Room in Building 2 6 a.m. to 10 a.m. It is a full hot buffet and costs \$ 5.00.

All rooms have a coffe pot, hair drier, iron and board, and most important a refrigerator and microwave!

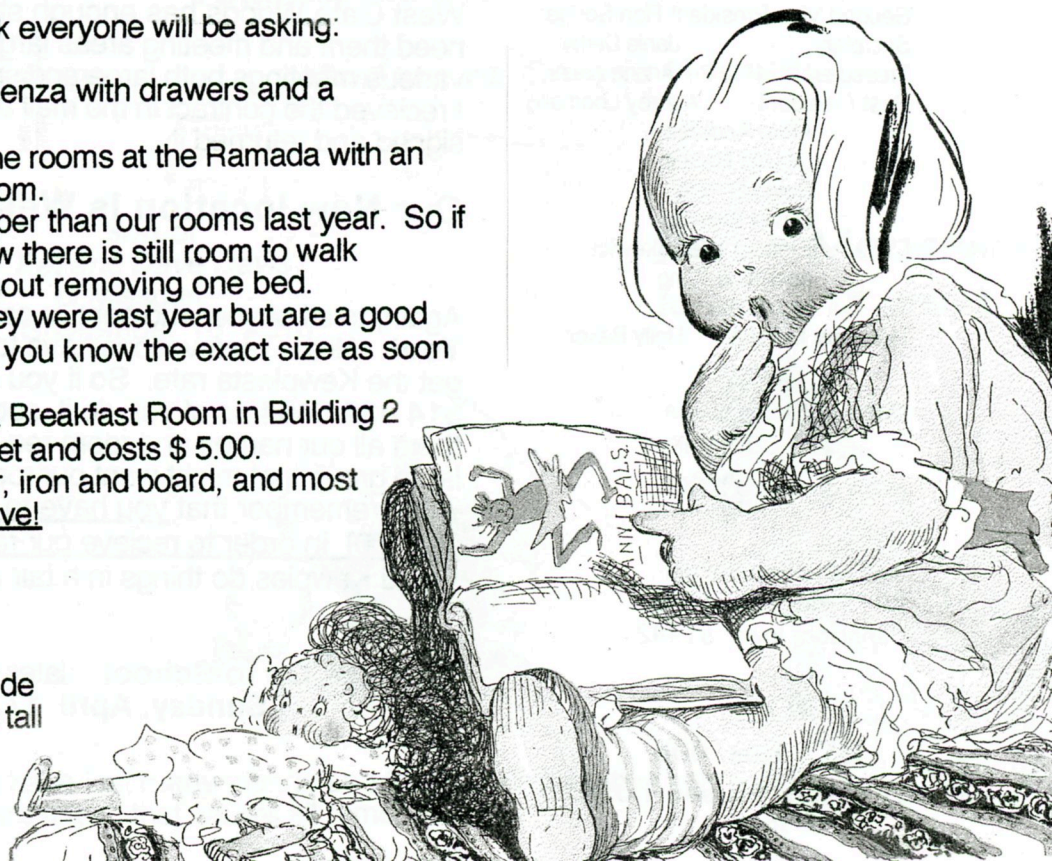
### Last Minute News

**Room windows** are 79 inches wide  
and 48 inches tall



Other extras that are available are:

- Wireless Internet service
- Soda and ice machines in each building
- Shuttle service
- A Pizza Shop located in the lower level of the Clubhouse.
- An indoor and outdoor Pool
- An exercise room
- A massage Therapist
- A coin laundry
- Outdoor gas grills
- A campfire area
- A sand base volleyball court
- Nature trails and waterfalls





# Doll Contest 2011



Here are the categories early so that you can get ready for April nice and early. **Kewpies Go To School** should be fun, so read and see if you can do something different this year. Let's have fun!

## Categories

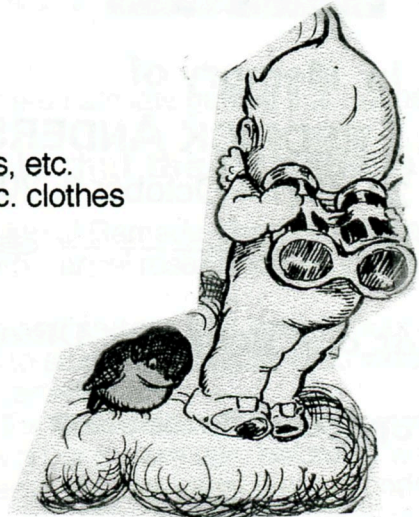


### Class I **Straight Bisque Kewpies**

- A. Dolls with moveable arms
  - 1. dolls 4" and under
  - 2. Dolls 4" to 8"
  - 3. Dolls 8" and over
- B. Dolls with molded hats, shoes, clothes, etc.
- C. Dolls with added crepe paper, felt, etc. clothes
- D. Dolls with painted shoes, clothes, etc.
- E. Dolls with molded [immobile] arms

### Class II **Action Kewpies**

- A. Kewpies in standing positions
- B. Kewpies in sitting positions
- C. Kewpies in lying positions
- D. Multiple Kewpies [Huggers]
  - 2 or more Kewpies joined
- E. Kewpie Doodle Dogs



### Class III **Composition**

- A. Kewpie
- B. Scootles

### Class IV **Fabric Kewpies Kuddly**

- A. Jersey with mask Face
- B. Plush
  - 1. Mask face
  - 2. Vinyl Face

### Class V **Vintage Bisque Scootles**

### Class VI **Hard Plastic Kewpies**

### Class VII **Celluloid Kewpies**

- A. under 4"
- B. over 4"

### Class VIII **Vinyl by Cameo [before 1970]**

- A. Kewpies
  - 1. 12" and under
  - 2. over 12"
- B. Scootles
  - 1. 12" and under
  - 2. over 12"
- C. Kewpie Gal

### Class IX **Reproduction Dolls [any size]**

- A. Kewpie
- B. Scootles

### Class X **Dressed by Owner Kewpie or Scootles**

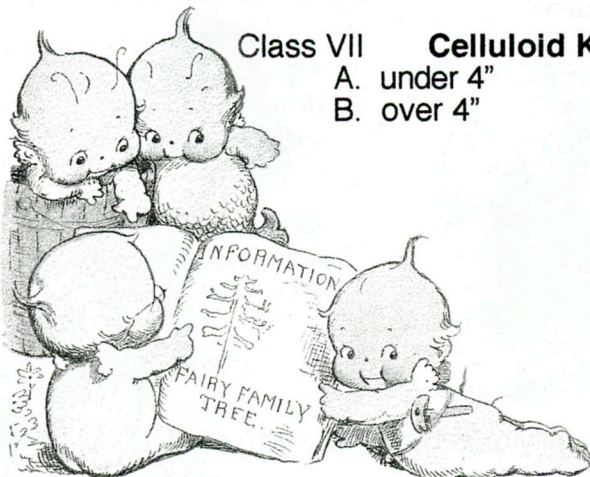
- A. School Clothes
- B. Party Clothes

### Class XI **Dressed for Theme may have accessories [base may be 12" x 20" or under]**

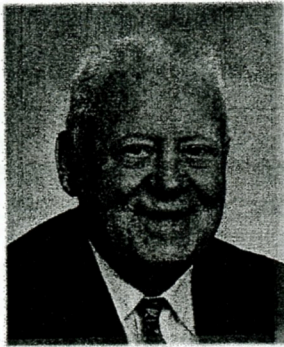
- A. School Scene
- B. Kewpie in Time Out
- C. Kewpie Dressed for Recess

Class XI **Dressed For Theme** is a new addition and may use accessories.

**ALL OTHER ENTRIES MUST BE DOLL ONLY !**







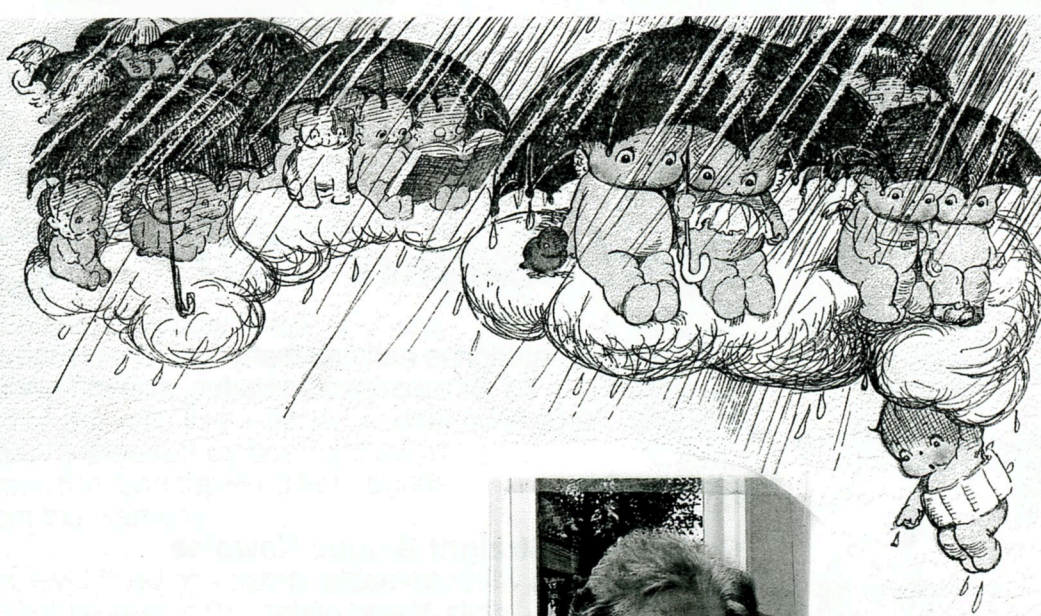
In Memory of

**ARNOLD FREDRICK ANDERSEN**

February 20, 1927 ~ October 6, 2010

Member of our Board of Directors

Husband of Joann Andersen



*Evelyn Lee Krause*

March 20, 1926 - November 18, 2010

Pearl Hodges Award Winner 2010

Former Member of our Board of Directors

Mother of Connie Harrell

*Arnold Dean Drake*  
"Pete"

June 10, 1928 - December 9, 2010

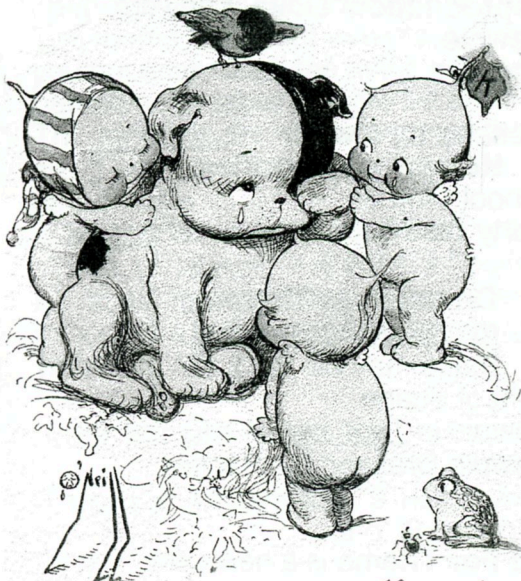
brother of

June Anderson and Donna Nall

Son of  
Pat and Dave Davis  
of Missouri  
September 16, 2010

**Jayne Menssen**

January 13, 2011

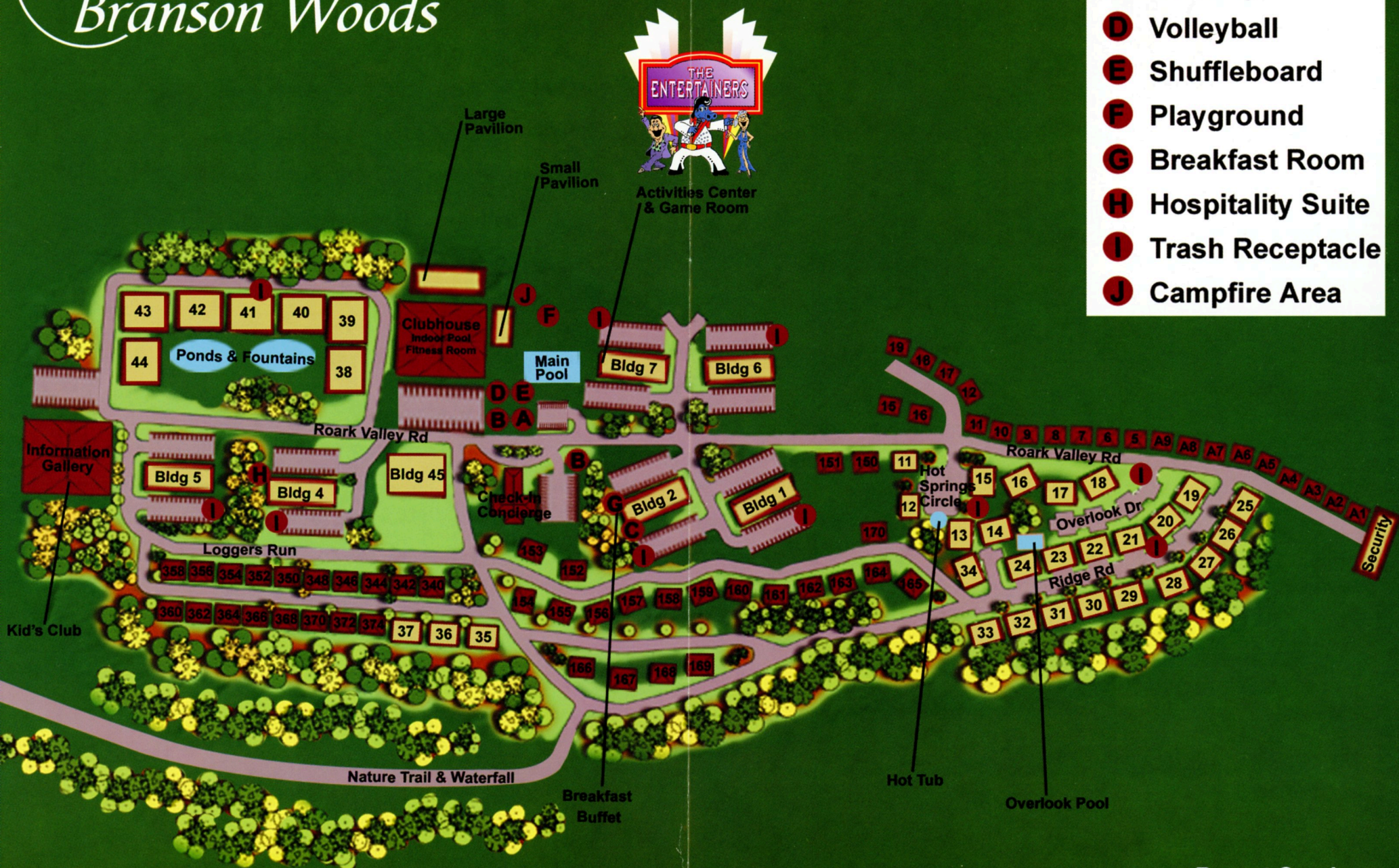


**Kewpies** have lost many friends and family members this year.  
These are a few that we will all remember.



# Westgate Branson Woods

- A** Basketball
- B** Horseshoes
- C** Laundry
- D** Volleyball
- E** Shuffleboard
- F** Playground
- G** Breakfast Room
- H** Hospitality Suite
- I** Trash Receptacle
- J** Campfire Area



Resort Services  
Ext. 1234



# Please Bring This With You in April

## Driving Instructions to Westgate Branson Woods Resort

Go South on highway 65

Turn west at the Red Road  
Shepard of the Hills Expressway  
also marked 248

Follow 248 five electric lights.  
Turn right on Roarke Valley Rd  
It will look as if you are  
going into the Quarry. The  
gates to Westgate Woods is  
on the left side of the road.

### Alternate route

When 248 turns right  
[second electric light]  
you can stay on the red  
route or go straight on  
Gretna Rd  
[one more electric light]  
to Roarke Valley Rd.  
Go one more stop light.  
Turn Right [north]  
It will look as if you are  
going into the Quarry. The  
gates to Westgate Woods  
is on the left side of the road.

If you get to highway 76  
you have gone one  
electric light too far.

